

# Franklyn James



Carmine Wharf, 30 Copenhagen Place, E14 7FF

£2,300 Per Calendar Month





## Carmine Wharf, 30 Copenhagen Place, E14 7FF

**£2,300 Per Calendar Month**

Located on the fourth floor and south facing this bright and spacious apartment features a stylish open plan kitchen and reception area with floor to ceiling windows allowing for plenty of natural light. The living space opens onto a large private balcony offering impressive views of Canary Wharf.

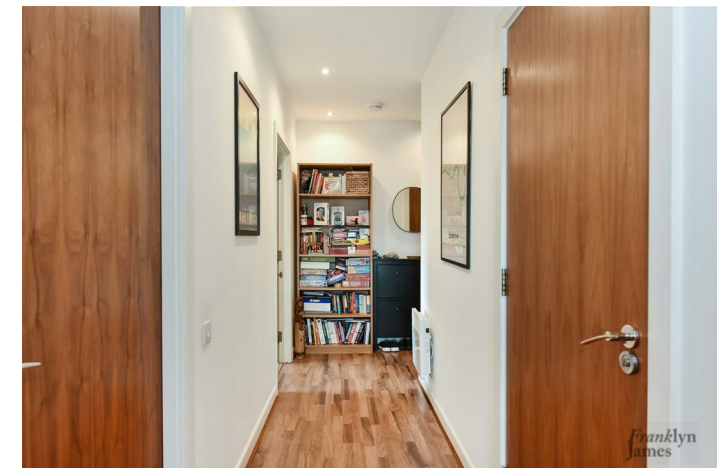
Further benefits include two generous double bedrooms and a modern three piece bathroom suite. The property is offered fully furnished and finished to a high standard throughout.

Carmine Wharf is ideally situated within walking distance of Westferry and Limehouse DLR stations, offering excellent links to Canary Wharf, the City, and beyond. Local shops, cafes, and riverside walks are also close by.



## Description

- Fully furnished to a high standard
- Located on the fourth floor of a secure development
- Two generously sized double bedrooms
- Bright and spacious open-plan reception and kitchen area
- Floor to ceiling windows providing excellent natural light
- Large private south facing balcony with Canary Wharf views
- Modern and stylish three piece bathroom suite
- Secure gated development with lift access
- Excellent transport links via Westferry and Limehouse DLR
- Easy access to Canary Wharf, the City & local amenities



Furnished

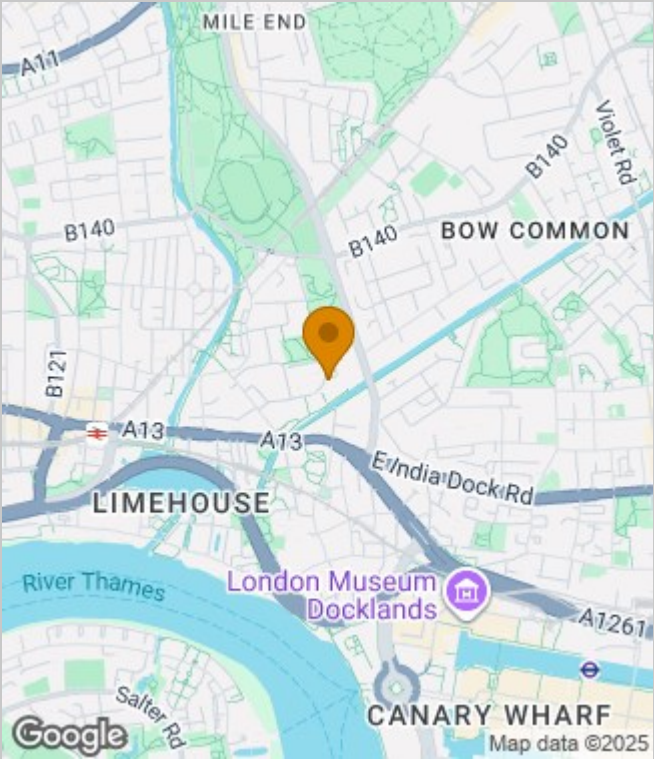
Council Tax Band: D

Available: 12th September 2025

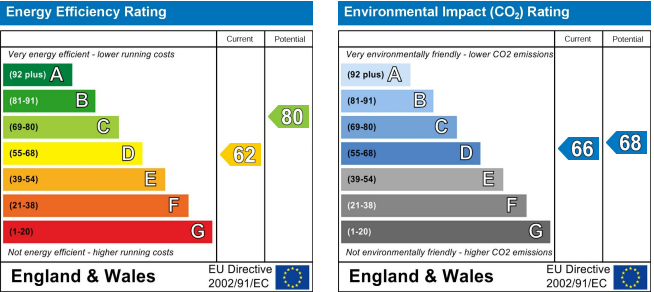




Area Map



Energy Performance Graph



These particulars, whilst believed to be accurate are set out as a general outline only for guidance and do not constitute any part of an offer or contract. Intending purchasers should not rely on them as statements of representation of fact, but must satisfy themselves by inspection or otherwise as to their accuracy. No person in this firms employment has the authority to make or give any representation or warranty in respect of the property.